

**Proposed Stock Tank Spring Development  
December 2025  
Helena Hunters and Anglers Association**

An RV Ranch worker stated he is applying for a permit to access a stock tank improvement with an excavator into the Lazyman Inventoried Roadless Area.

**Figure 1.**



Location of stock tank depicted by red X in Figure 1.

46.53340, -112.20352

RV Ranch worker that told me they are applying for a permit to build a temporary road and then re-habing it to improve a stock water tank. They are working with a grazing specialist (Heidi) on the Helena District to upgrade the spring tank in the Lazy-man IRA. They are required to excavate a large hole 12 feet deep for collection of water. He indicated the only way to do this is with an excavator. I told him there should be a better way to work on the spring without using an excavator. Dennis Milburn and Lois Olsen installed the original spring tank in Lazy-man using mules in the mid 1980's

Figure 2.



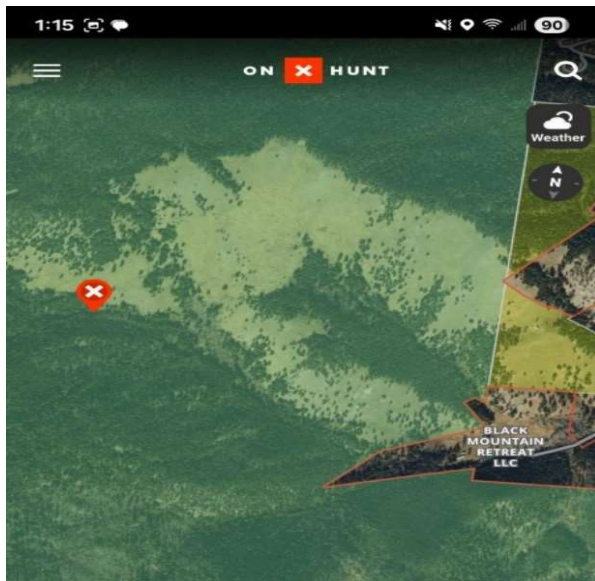
Existing Tanks are in Good Condition. 46.53340 -112.20352

**Figure 3.**



Spring intake culvert is full of silt.  
This Spring site can be improved using basic hand tools.

**Figure 4.**



Location of spring tank site marked with a Red X. in figure 4.

1/2-mile-long trail was cleared using a side by side in August 2025 from the Black Mountain Retreat land leading towards the spring tank in a NW direction up the draw.

Black Mountain Retreat land depicted in the lower right-hand corner of Figure 4.

Figure 5.



Figure 5. Photo of trail cleared into the IRA using a side-by-side from private land.

46.52930 -112.19373

Figure 6.



Side by Side tracks      46.53244 -112.19901

Extending about ½ mile, a two-track route has been cleared using a side-by-side vehicle as noted by tracks leading to the proposed spring/tank site. While clearing the route, the side-by-side drove through a stream and a damp meadow.

I reduced the two-track down to a single-track trail by pulling in debris, and setting the phylon non-motorized sign back to where it was originally installed in the center of the gate between the border of the Forest Service and Black Mountain Retreat land.

Figure 7.



Motorized use into the IRA from the Black Mountain Retreat has been occurring over the past three years for the purpose of cutting and hauling out fire wood. Tracks in the snow indicated the use of a vehicle and tractor.

Helena Hunters and Anglers is concerned that any permits allowing motorized use into the Lazyman IRA would degrade the integrity of the roadless land.

HHAA Inquiries/Offers/Recommendations:

1. Motorized use into the IRA from the Black Mountain Retreat has been occurring over the past three years for the purpose of cutting and hauling out fire wood. Tracks in the snow indicated the use of a vehicle and tractor. Is there an application from the RV Ranch (or any of its employees) to the Helena National Forest to access the springs at the head of Colorado Gulch and/or the area near Moose Creek on the Rimini Side of the Lazyman IRA?
2. HHAA is available to assist in sign placement or distribution of educational materials describing what activities are allowed in an Inventoried Roadless Area.
3. HHAA would like to see signage on the boundary of the IRA that indicates to the public that they are entering an IRA. Certain allowed and not allowed uses could be itemized.
4. The stock tank/spring development need not involve an excavator. Simple maintenance of the tanks and the site would suffice.