

**4000-001 North in red, from Alternative 4 Transportation, Trails, and Road Closure/Obliteration map.**

**METHODS:** The North half of 4000-001 was the first road to be surveyed, on June 2, 2019. This was before a standard protocol was developed for the field crew in April of 2020, wherein waypoints and photos were taken at specified intervals. However, adequate waypoints were taken to delineate the course of a very vague “road” on an aerial map.

**Name of Surveyor:** Gayle Joslin, accompanied by Doug Powell and Matthew Bishop

**Date(s) surveyed:** June 2, 2019

**GPS Model:** Garmin XL12

**Datum:** WGS84

**GPS Position Format:** hddd°mm’ss.s”

**Mapping Apps:**

At this time I did not have a mapping app that would geo-reference the FS Tenmile-South Helena Project Alternative 4 Transportation, Trails, and Road Closure/Obliteration map (D5\_2d\_20161115\_MapTenmileALT4Transport) so I used this map in addition to the 1:64,000 Black Mountain topographic map and my gps to locate route 4000-NS04.

Google Earth 3D waypoint map

**Time spent:**

Approximately 5 hours

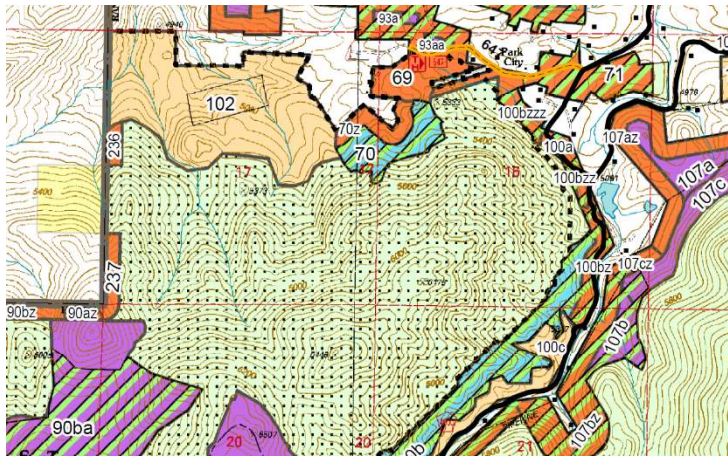
**4000-001** Yellow waypoints. Disregard other “roads” in upper right. 4000-001 does not exist on the Forest Service inventory of roads (Helena National Forest Roads Report, 2004), as a system , non-system or otherwise designated road.



North half of 4000-001 extends from the divide between Travis Creek, Colorado Gulch, and Nelson Gulch – to the Park City area at the upper reaches of Nelson Gulch. This was the direction in which photos and waypoints were documented.

This report (Report B) addresses the main road, 4000-001 North.

All of its spurs are addressed in Report F. Within the Lazyman Inventoried Roadless Area, Spurs coming off of 4000-001 North are numbered as follows: 647-NS16, 647-NS15, 647-NS13, 647-NS13, 647-NS12, 647-NS10, 647-NS09, 647-NS08. In addition, another group of 647-NS roads that occur in the upper Nelson Gulch area, but are not directly attached to 4000-001, are addressed in Report G.

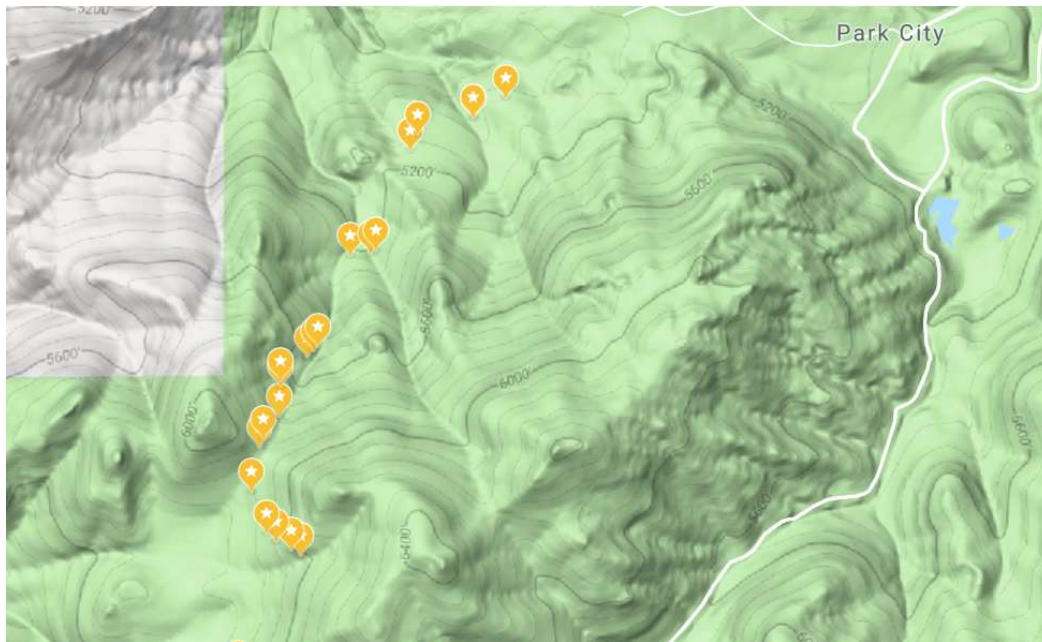


Proposed Vegetation Management units in screen shot to left would be serviced by 4000-001 (north), including 102 a regeneration harvest, 70 shaded fuel break, and private land buffers 237, 236, 70.

Units with diagonal slashing would be mechanically treated and contracts allow for possibility of live tree removal.

Forty-five photos and 21 waypoints were taken. This route was conducted prior to standards being set for all future route documentation, therefore photos and waypoints were not taken at 100 yard intervals, but most of the route was represented on that survey and is submitted here.

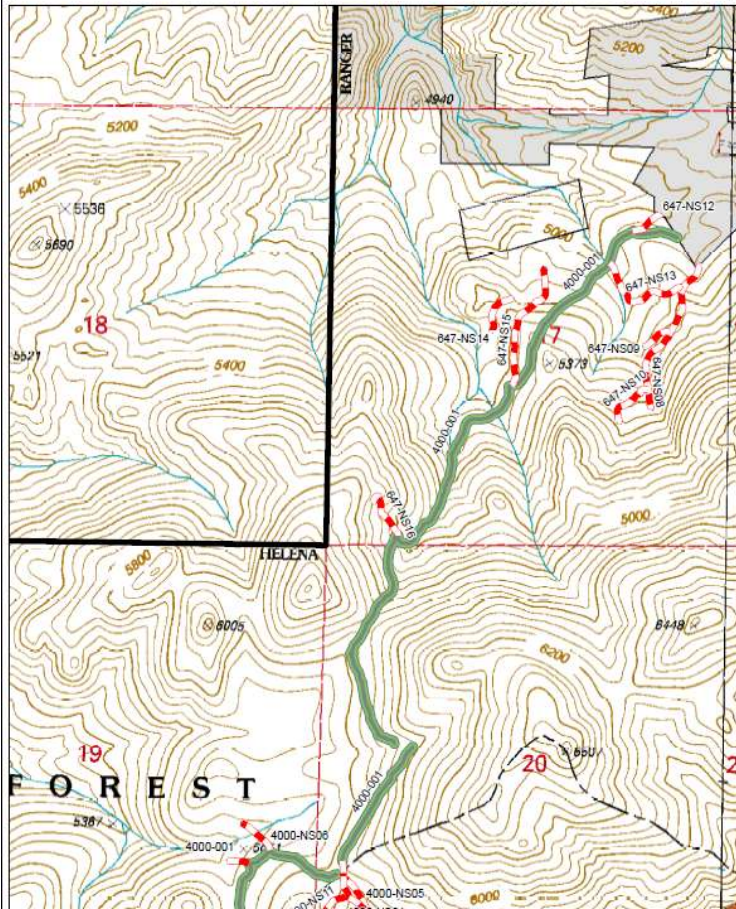
Topographic map of 4000-001 North waypoints.



TWO OBSERVATIONS:

1. Roads do not exist.
2. Most treatment units do not occur where the heaviest downfall exists, thus the argument that 'downed timber is a fire hazard' is not born out by where treatment units are actually proposed.

**Tenmile - South Helena Project  
Record of Decision  
Transportation Plan and Route Closure Methods Map - Detail**



Route Closure Method Descriptions		
Method	Description	Miles
1. Barrier Only	Road remains on the Transportation system, but is closed to public motorized use. Road surface will be stabilized but culverts remain in place. Administrative motorized use could be permitted.	5
2. Barrier and Storage	Road remains on the Transportation System, but is closed to public motorized use and placed into long-term storage. Road surface will be stabilized, culverts removed, and stream courses restored to natural contours. Barriers such as gates, rocks, downed trees or fencing will restrict motorized use. Administrative motorized use will generally not be possible or permitted.	2
3. Barrier and Stabilization	Road is not needed for long-term use, and will be removed from the Transportation System. Road surface and drainage will be stabilized, culverts removed and stream courses restored to natural contours. Barriers such as rocks, downed trees or fencing will restrict motorized use. Administrative motorized use will not be permitted.	5
4. Obliteration	Road will be removed from the Transportation System and obliterated, including recontouring where appropriate, decompression/piling, revegetation, culvert removal, re-establishment of natural drainage contours. Administrative motorized use will not be permitted.	31
5. Obliteration with non-motorized system trail	Road will be removed from the Transportation System and obliterated as described above in closure level #4, with a non-motorized system trail left in place using FS non-motorized trail specifications. Administrative motorized use will not be permitted.	7
6. Obliteration with non-system, single-track	Road will be removed from the Transportation System and obliterated as described above in closure level #4, with a non-motorized non-system single-track left in place to allow for permitted livestock travel. Administrative motorized use will not be permitted.	3
7. Barrier and Stabilization with non-motorized system trail	Road will be treated as described above in #3, but with a non-motorized system trail left in place using FS non-motorized trail specification. Administrative motorized use will not be permitted.	6
<b>Total</b>		<b>59</b>

Legend

PHOTO POINT	PHOTO DSCN	GPS #	WGS84 (UTM)	(UTM)	LOCATION	DESCRIPTION
		79	0411864	5151977	Travis Cr-Colorado Gulch Pass	No "road" exists in Park, only vague trail
PP7	[DSCN0919 DSCN0920]	80	0412491	5152665	Colorado Gulch (Tenmile drainage)	Mary-Anne crossing; game trails; W. of Shannon Mtn
PP8	DSCN0921	81	0412451	5152687	Colorado Gulch	NW of Mary-Anne crossing; Doug
PP9	[DSCN0922 DSCN0923]	82	0412388	5152722	Colorado Gulch	Meadow – no trail Meadow – Black Mountain on left
PP10	DSCN0924	83	0412951	5152757	Colorado Gulch	Game trail; no "road" exists
PP11	DSCN0925	84	0412289	5152928	Colorado Gulch	Game trail; downfall; Doug P. Matt B.
PP12	DSCN0926	85	0412327	5153109	Colorado Gulch	S of Grassy Knob pass; game trail only
PP13	DSCN0927	86	0412345	5153141	Colorado side of Pass-Nelson	Game trail; Matt B. Doug P.
PP14	[DSCN0928 DSCN0929]	87	0412410	5153234	Nelson Gulch	Starting down into Nelson Gulch N of pass into Nelson Gulch; Doug/Matt
PP15	DSCN0930	88	0412416	5153357	Nelson Gulch	Not in "treatment;" Downfall; D/M
PP16	DSCN0931 DSCN0932	89	0412415	5153380	Nelson Gulch	Skirted around heaviest downfall; Game trail higher on hill above D/M
PP17	DSCN0933	90	0412526	5153473	Nelson Gulch	Doug/Matt working way thru downfall
PP18	DSCN0934	91	0412556	5153496	Nelson Gulch	Old swath cut through
PP19	[DSCN0935 DSCN0936]	92	0412574	5153515	Nelson Gulch; 360°photos	All photos at this Photo Point is of downfall; not in fuel treatment

	DSCN0937					Although purported to be a fire
	DSCN0938					Hazard.
	DSCN0939					
	DSCN0940]					Downfall; Matt B. and Doug P.
PP20	[DSCN0941	93	0412710	5153884	Nelson Gulch	Meadow looking SW
	DSCN0942]					Meadow looking N; Matt/Doug
PP21	[DSCN0943	94	0412794	5153892	Nelson Gulch	Wetland;
	DSCN0944]					Pond; game trail; Doug/Matt
PP22	[DSCN0945	95	0412816	5153908	Nelson Gulch	Stream crossing; wetland
	DSCN0946]					Stream
PP23	DSCN0947	96	0412959	5154211	Nelson Gulch	Proposed Improvement Harvest; Matt
PP24	DSCN0948	97	0412993	5154374	Nelson Gulch	Proposed Improv. Harvest Unit 102
PP25	[DSCN0949	98	0413224	5154440	Nelson Gulch	Illegal dumping of gravel in creek within
	DSCN0950					IRA adjacent to private land, apparently
	DSCN0951					to “harden” the surface for driving
	DSCN0952]					
PP26	DSCN0953	99	0413220	5154441	Nelson Gulch	Proposed “Improvement Harvest” 102; very little downfall
PP27	DSCN0954	100	0413354	5154517	Nelson Gulch	Proposed Unit 102
<b>PHOTO POINT</b>	<b>PHOTO DSCN</b>	<b>GPS #</b>	<b>WGS84 (UTM)</b>	<b>(UTM)</b>	<b>LOCATION</b>	<b>DESCRIPTION</b>

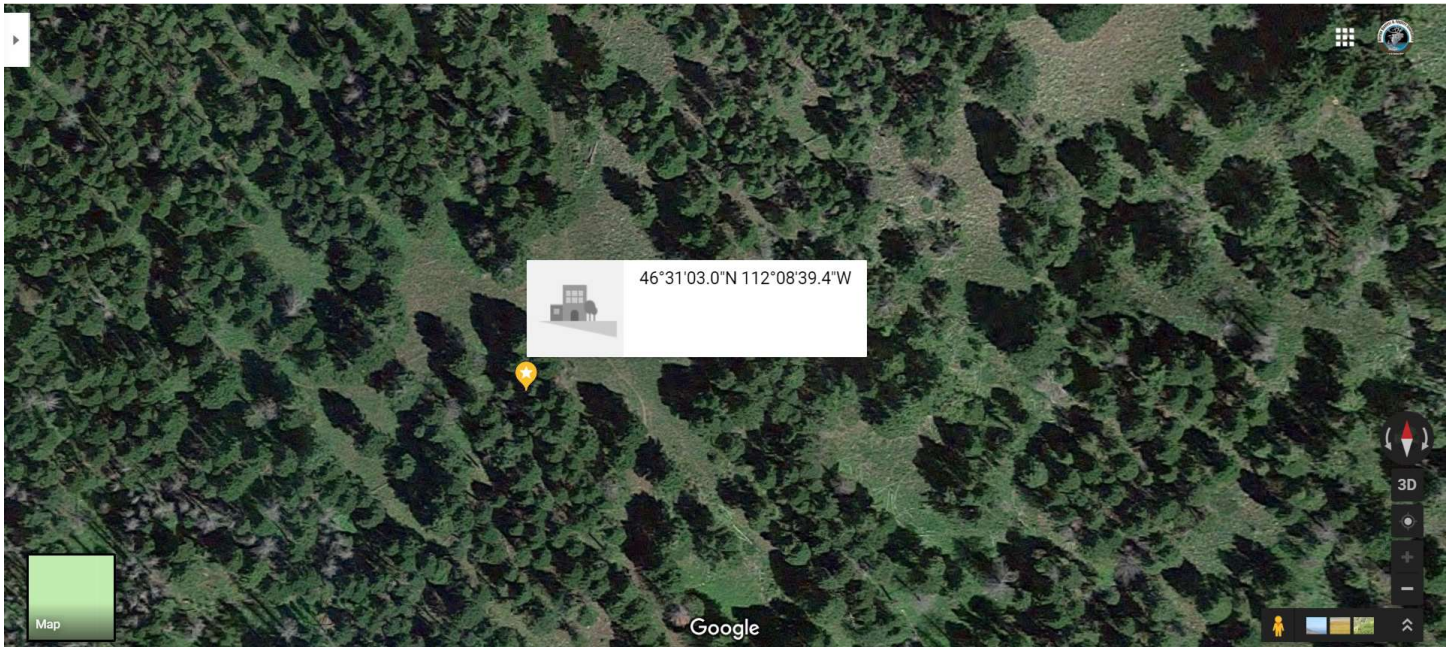


Photo point on above map is this meadow DSCN0912 – in Unit 173ab, proposed Mechanized Shaded Fuel Break.



Waypoint 77 4000-001 North At divide between Travis Creek, Colorado Gulch, and Nelson Gulch. Direction of travel was north across the head of Colorado Gulch, then down into Nelson Gulch. No road bed, or trail in this park.

PP7	[DSCN0919/ DSCN0920]	80	0412491 duplicate	5152665 photo	Colorado Gulch (Tenmile drainage)	Mary-Anne crossing; game trails; W. of Shannon Mtn
-----	-------------------------	----	----------------------	------------------	--------------------------------------	---



PP8	DSCN0921	81	0412451	5152687	Colorado Gulch	NW of Mary-Anne crossing; Doug
-----	----------	----	---------	---------	----------------	--------------------------------



PP9	[DSCN0922	82	0412388	5152722	Colorado Gulch	Meadow – no trail
	DSCN0923]					Meadow – Black Mountain on left



PP10	DSCN0924	83	0412951	5152757	Colorado Gulch	Game trail; no "road" exists
------	----------	----	---------	---------	----------------	------------------------------



PP11	DSCN0925	84	0412289	5152928	Colorado Gulch	Game trail; downfall; Doug P. Matt B.
------	----------	----	---------	---------	----------------	---------------------------------------



PP12	DSCN0926	85	0412327	5153109	Colorado Gulch	S of Grassy Knob pass; game trail only
------	----------	----	---------	---------	----------------	--



PP13	DSCN0927	86	0412345	5153141	Colorado side of Pass-to Nelson Gulch	Game trail; Matt B. Doug P.
------	----------	----	---------	---------	---------------------------------------	-----------------------------



PP14	[DSCN0928	87	0412410	5153234	Nelson Gulch	Starting down into Nelson Gulch
------	-----------	----	---------	---------	--------------	---------------------------------



PP14	DSCN0929]					N of pass into Nelson Gulch; Doug/Matt
------	-----------	--	--	--	--	--



PP15	DSCN0930	88	0412416	5153357	Nelson Gulch	Not in "treatment;" Downfall; Doug/Matt
------	----------	----	---------	---------	--------------	---

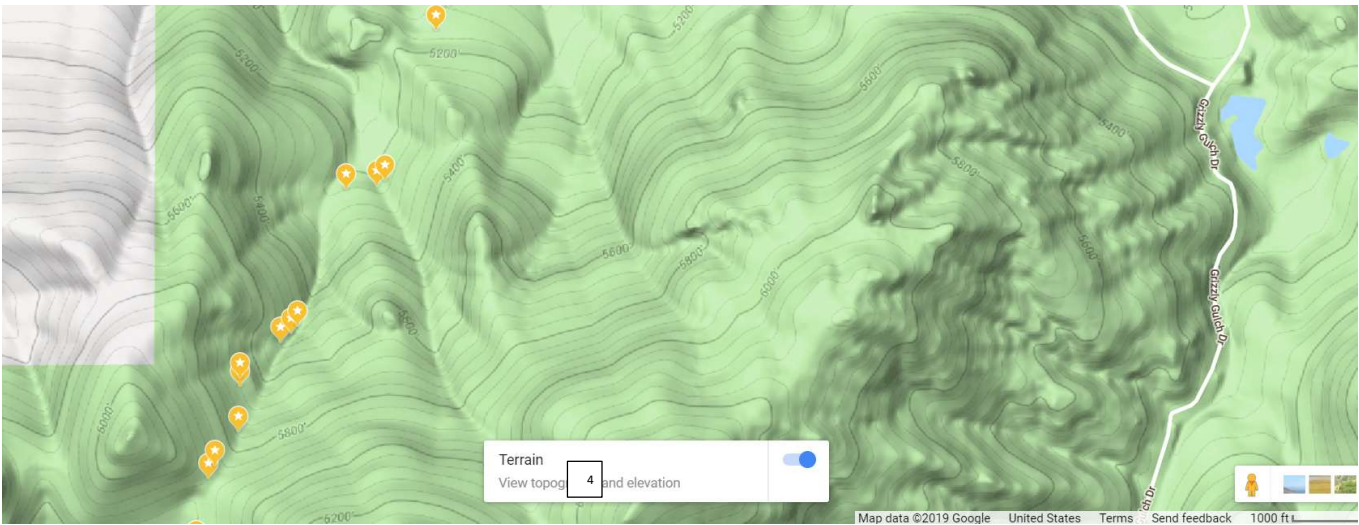


Photo Points 16 -26 are as of follows with associated photograph numbers.

PP16	DSCN0931	89	0412415	5153380	Nelson Gulch	Skirted around heaviest downfall;
------	----------	----	---------	---------	--------------	-----------------------------------



DSCN0932						Game trail higher on hill above Doug/Matt
----------	--	--	--	--	--	---



PP17	DSCN0933	90	0412526	5153473	Nelson Gulch	Doug/Matt working way thru downfall
------	----------	----	---------	---------	--------------	-------------------------------------



PP18	DSCN0934	91	0412556	5153496	Nelson Gulch	Old swath cut through
------	----------	----	---------	---------	--------------	-----------------------



PP19	[DSCN0935	92	0412574	5153515	Nelson Gulch; 360°photos	All photos at this Photo Point are of
	DSCN0936					downfall; not in fuel treatment
	DSCN0937					Although purported to be a fire
	DSCN0938					hazard.
	DSCN0939					
	DSCN0940]					Downfall; Matt B. and Doug P.



35



36



37



38



39



40



Aspen meadow Photo Point 20 [DSCN0941, DSCN0942] on the left.

Pond Photo Point 21 [DSCN0943, DSCN0944] center.

Creek Crossing Photo Point 22 [DSCN0945, DSCN0946] on the right.

Riparian meadow and creek crossing that show no road present.



PP20. Aspen meadow  
DSCN0941

PP20. Meadow looking north; Matt and Doug DSCN0942



PP21	[DSCN0943	94	0412794	5153892	Nelson Gulch	Wetland;
	DSCN0944]					Pond; game trail; Doug/Matt



*Small pond, game trail,  
no road. DSCN0944*

PP22	[DSCN0945	95	0412816	5153908	Nelson Gulch	Stream crossing; wetland
------	-----------	----	---------	---------	--------------	--------------------------



PP22	DSCN0946]	95	0412816	5153908	Nelson Gulch	Stream
------	-----------	----	---------	---------	--------------	--------

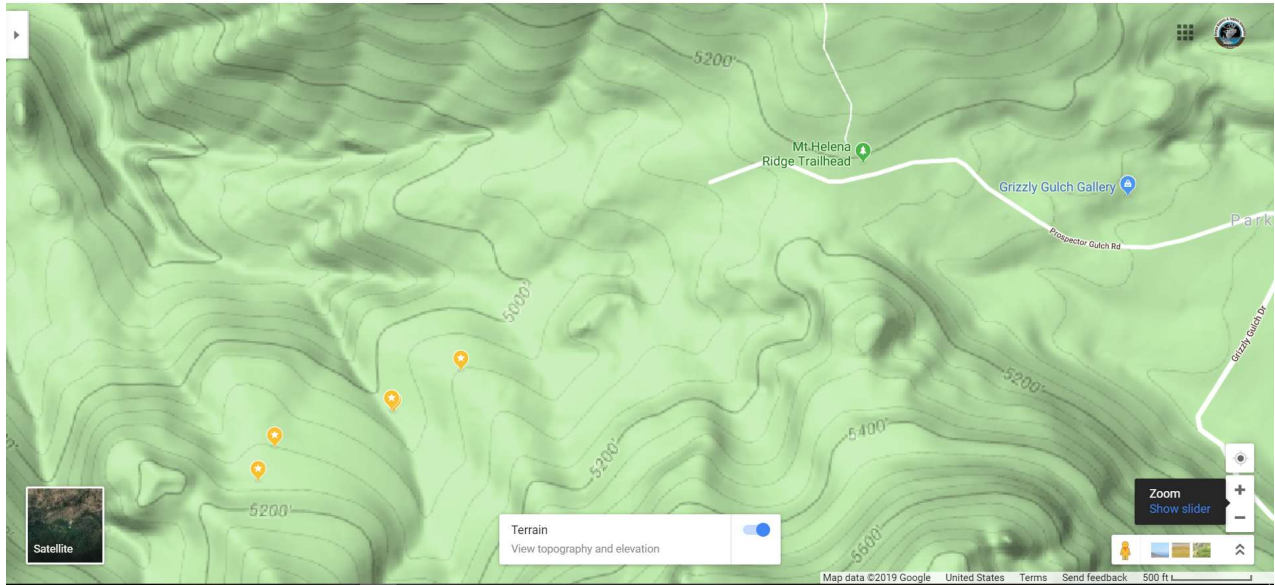


PP23	DSCN0947	#41	96	0412959	5154211	Nelson Gulch	Proposed Improvement Harvest Unit 102; Matt
------	----------	-----	----	---------	---------	--------------	---

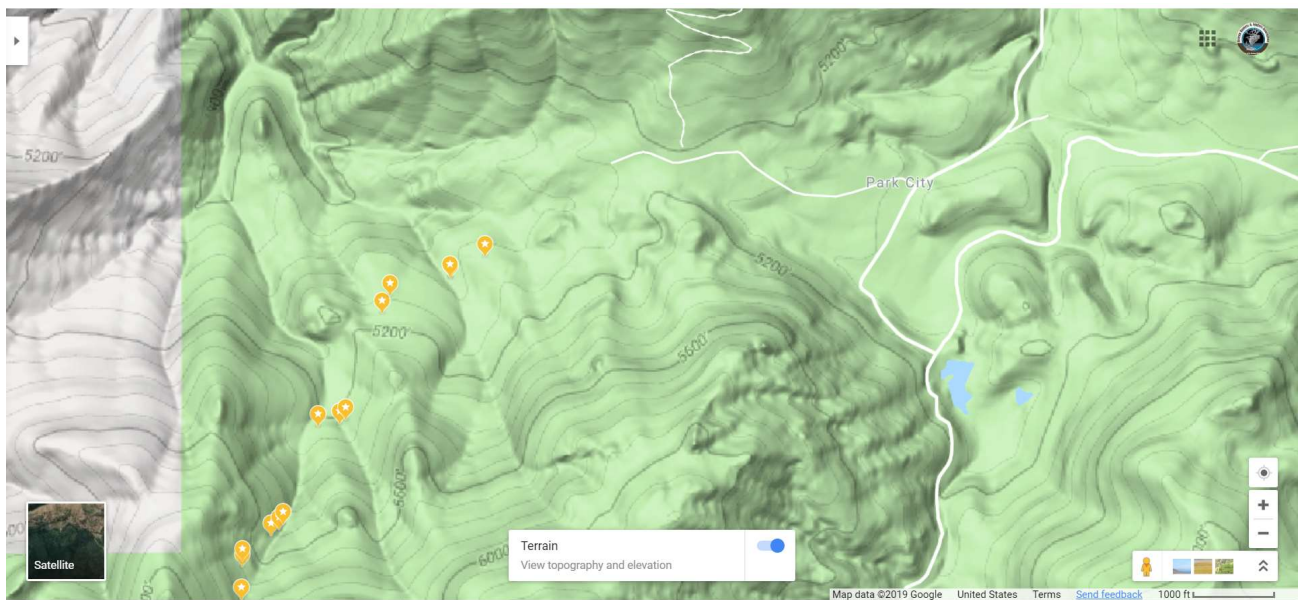


PP24	DSCN0948	#42	97	0412993	5154374	Nelson Gulch	Proposed Harvest Unit 102
------	----------	-----	----	---------	---------	--------------	---------------------------





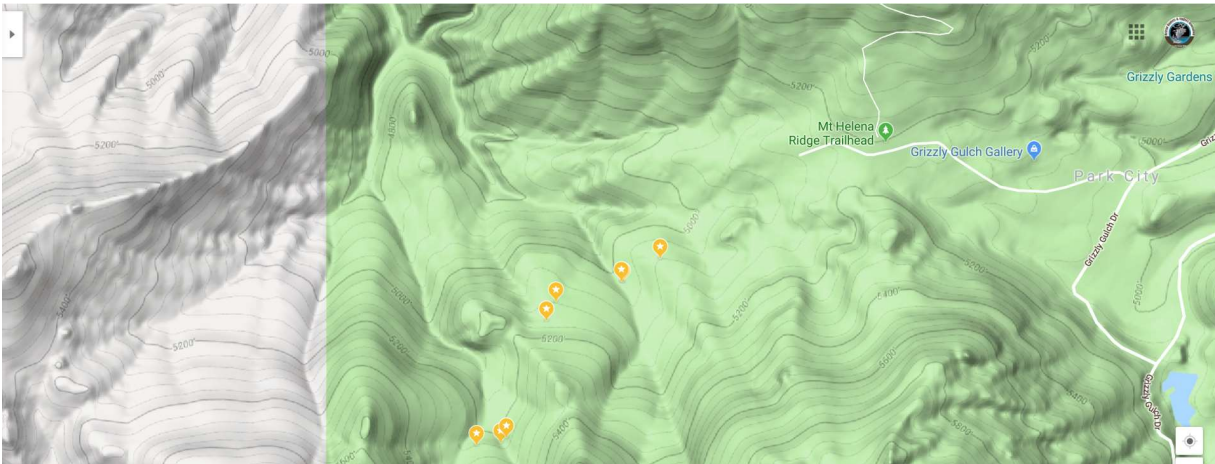
At this map scale, Google maps shows labels of certain features, including the Mt. Helena Ridge Trailhead and parking lot, the proximity of this parking lot to a constructed haul route that would have a “barrier” only, would create an unofficial route into the Inventoried Roadless Area. The TSH ROD did not evaluate this route, but it would likely become a “non-motorized trail” as defined by the southern portion of this same route (in blue) on the ROD Transportation Plan and Route Closure Methods Map. Other proposed trails are marked on the ROD Non-Motorized Trail System Map – but this one is slipping in under the radar without any analysis and would connect with proposed Trail B within the Inventoried Roadless Area, thus splitting the IRA in half from north to south, and further depleting wildlife security.



Second photo point from top is within the Inventoried Roadless Area but adjacent to private land where someone has been “hardening” the creek to drive across -- see Photo Point 25 below.

Photo Point 25. DSCN0949-DSCN0952 Gravel has been dumped in creek where driving has occurred

within the IRA





In the map above, the top waypoint is taken in proposed Unit 102, an Improvement Harvest. Ironically most units are established where there are green trees and little downfall. For example, photo DSCN0936 (at Photo Point 19) does not occur in any treatment unit.

Proposed "Improvement Harvest" Unit 102. PP26. DSCN0953 – very minimal downfall, as compared to photo below.



Photo Point 19. DSCN0936 – not in a treatment unit, yet there is heavy downfall that supposedly is a fire hazard.