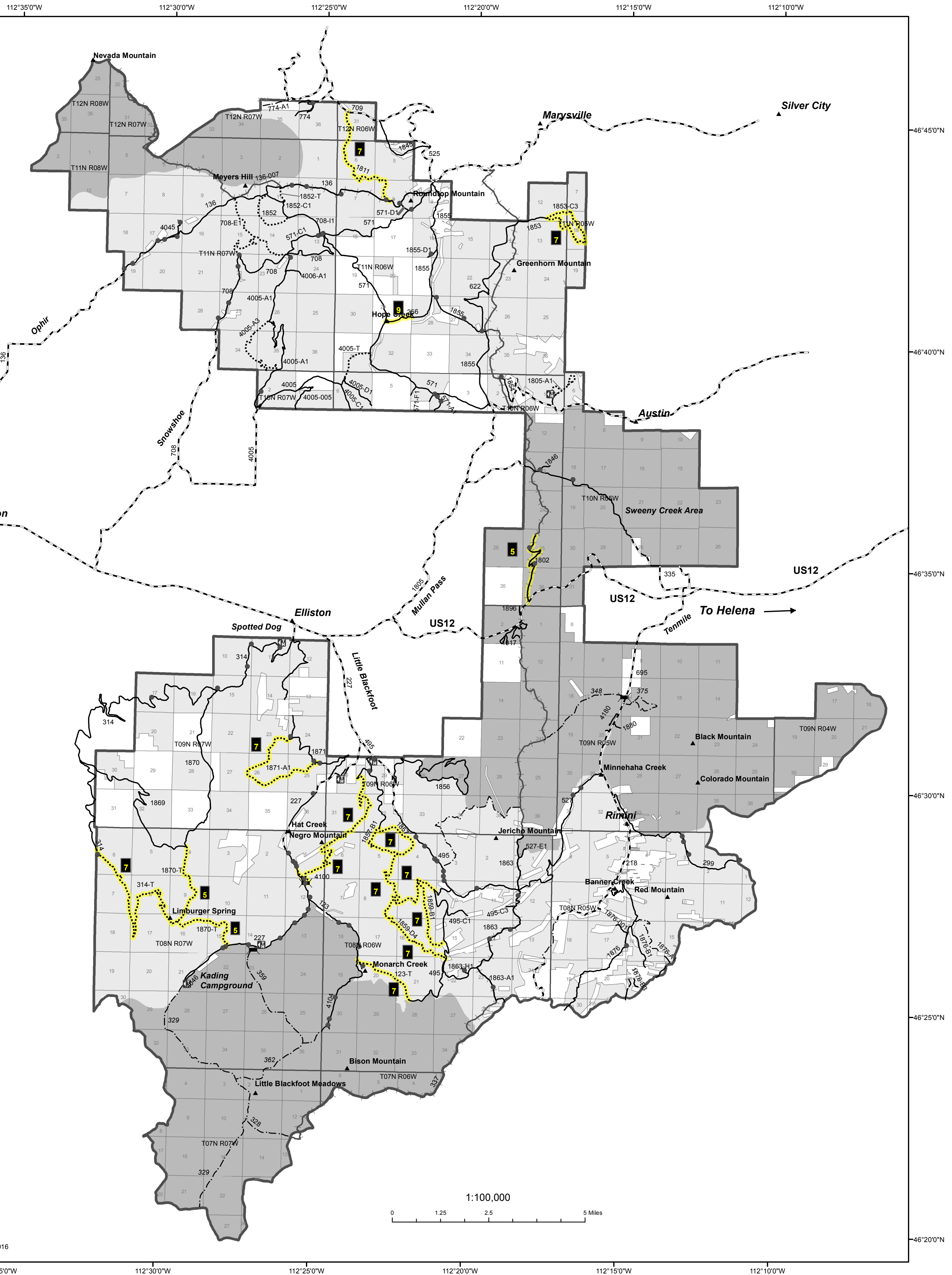


DivideTravel Plan Record of Decision Map

Helena-Lewis & Clark National Forest - Helena Ranger District

February 2016



Divide Travel Plan Record of Decision Map - Legend

- Divide Travel Plan Area
- State or County Road
- Road - open to licensed vehicles
- Trails - open to vehicles 50' or less in width, and non-motorized use
- Trail - non-motorized use
- Continental Divide National Scenic Trail
- Designated route with seasonal motorized use restrictions
- Trailhead
- Proposed Bridge
- Dispersed campsite located beyond 70' from a designated route (See description below)
- National Forest System lands open for snowmobiling 12/2-5/15
- National Forest System lands closed to snowmobiling, except on open or designated routes

DIVIDE ROUTE RESTRICTIONS

Designated Route Seasonal Restrictions
Routes open to motorized use are open yearlong unless a seasonal use restriction is indicated on the route. These routes are closed to motorized use during the periods shown, except for snowmobile use in designated open snowmobile areas from 12/2-5/15. Snowmobile use is restricted on all routes and open snowmobile areas from 5/16-12/1 (See Divide Travel Plan Record of Decision Winter Map for designated snowmobile routes)

- 5 Closed to motorized use 10/15-5/15
- 7 Closed to motorized use 9/1-5/15
- 9 Closed to motorized use 10/15-6/30

Parking and Access to Dispersed Camping

Parking
Parking will be allowed up to 30 feet from the edge of a designated route.

Access to Dispersed Campsites up to 70' from a designated route
Parking and motor vehicle use associated with dispersed camping would be allowed up to no more than 70 feet from the edge of a designated route as long as:

1. No new permanent routes are created by this activity
2. No damage to existing vegetation, soil, or water resources i.e., damage to live trees and shrubs, rutting, and eroding of stream banks or bare soil.
3. Travel off-route does not cross streams
4. Travel off-route does not traverse riparian or wet areas
5. Travel to and parking associated with dispersed campsites would be limited to no closer than 30 feet of a stream or body of live water.

Access to Dispersed Campsites further than 70' from a designated route
Dispersed campsites located more than 70 feet from the edge of a designated route that are identified on the alternative 5 map would remain open for dispersed camping and parking associated with dispersed camping. The five items identified under the access to dispersed campsites up to 70' from a designated route section are applicable for this as well.



Disclaimer:
The Forest Service uses the most current and complete data available. GIS data and product accuracy may vary. They may be developed from sources of differing accuracy, accurate only at certain scales, based on modeling or interpretation, incomplete while being created or revised, etc. Using GIS products for purposes other than those for which they were created may yield inaccurate or misleading results. The Forest Service reserves the right to correct, update, modify or replace GIS products without notification. For more information contact:

Helena-Lewis and Clark National Forest
2880 Skyway Drive
Helena, Montana 59602
406-449-5201

